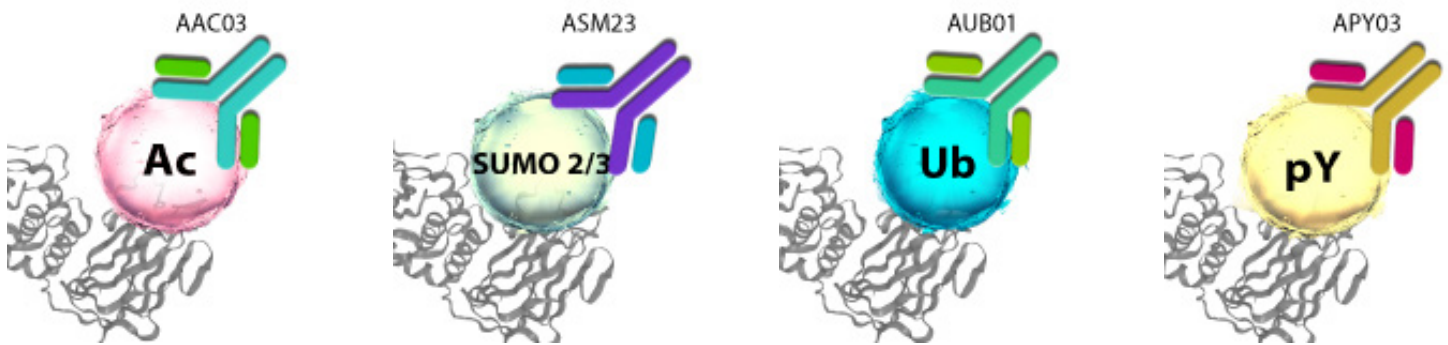


## Signal-Seeker PTM Antibodies: Great Discovery Tools To Identify Novel Regulatory Mechanisms

Promotion is valid from 15th May - 30th June 2021

# 20% OFF

**Highlights:** Our acetylation, ubiquitin, SUMO, and phosphotyrosine antibodies were developed in-house, and stringently tested to provide the strongest and most specific antibodies on the market.



Check out our **Signal-Seeker antibody page** for Cytoskeleton's complete list of available PTM antibodies

## Check Out Our Signal-Seeker Detection Kits



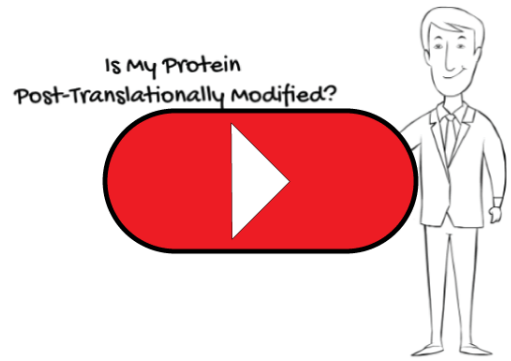
**Signal-Seeker Toolkits**

- Comprehensive kits
- Minimal optimization time
- Maximizes PTM detection
- Analyze with western blots

[Click to learn more](#)

 Keep It Simple  
Signal-Seeker PTM Toolkits

Post-Translational Modifications (PTMS) such as serine/threonine phosphorylation, tyrosine phosphorylation (pY), acetylation (Ac), ubiquitination (Ub) and SUMOylation (SUMO) have been shown to be key regulators in almost all cellular processes, including signal transduction, epigenetics, protein stability and localization, and cellular immunity. Learn more about Signal-Seeker? PTM Detection Kits by clicking on the video link.



## Selected Signal-Seeker Reference Materials

Cytoskeleton has prepared FAQs, Background Information, a PTM eBook, and Tech Tips specific to PTMs. Explore the links below to learn more!

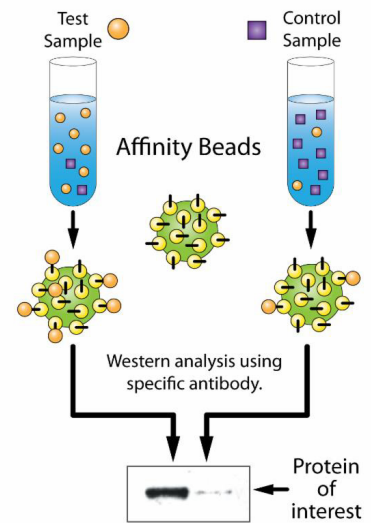
**Video Library - Tech Tips and FAQs - eBook - PTM Newsletters - Tips For New Investigators  
Detection Techniques - Validation Data - Background Information - Useful Links**

## High-Quality Affinity Beads Produce High-Quality Results

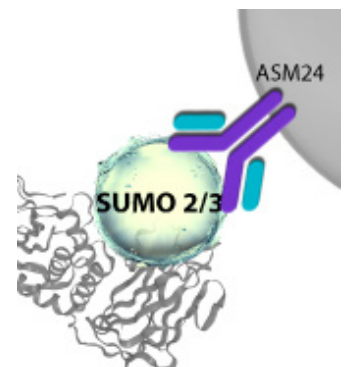
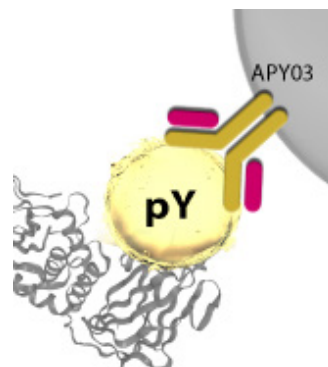
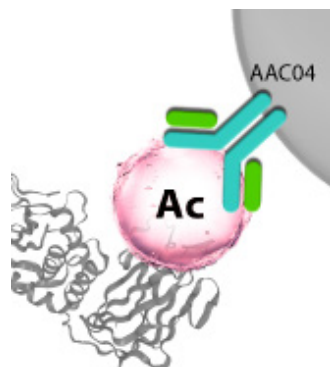
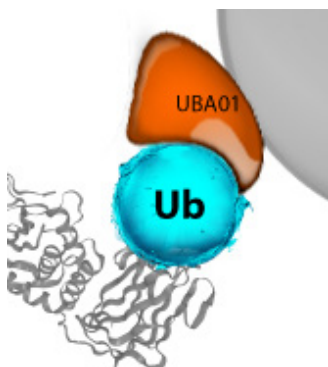
- **Highly Specific:** Recognize only the protein or peptide of your choice.
- **Widely Validated:** Hundreds of citations available.
- **High Affinity Reagents** for peptides and proteins modified with:

**Acetylation**  
**Phosphotyrosine**

**SUMOylation**  
**Ubiquitination**



Flow chart for using affinity beads for purification of the target protein.



Check out our **Signal-Seeker page** for Cytoskeleton's complete list of available PTM affinity beads