

SPECIAL 30% OFF





FOR 3 x 25µl Trial Size Antibody

OR Enjoy 15% with only 1x 25µl Trial Size Antibody!



Pick your own panel!

Promotion code: Panel2021

-  Opportunity to try before making a full-size commitment.
-  Ideal approach to screen multiple antibodies.
-  Best solution to conduct small-scale experiments.
-  Cover all research fields.



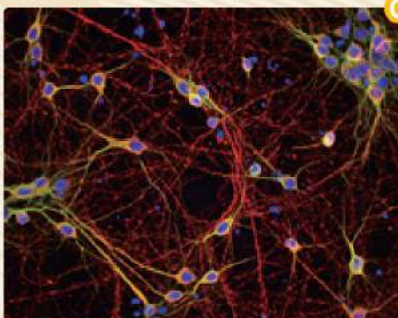
Nearly 9,000 antibodies to select from.

Suggested Panels

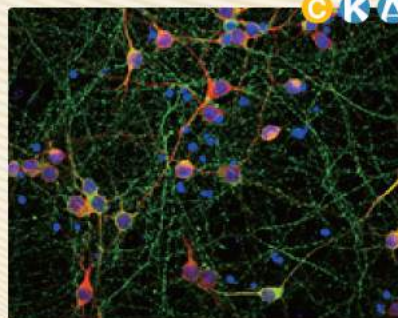
 Citation Support  KO/KD Validation  Comparable Abs

 IP/MS Analysis  Orthogonal Validation  Protein Overexpression

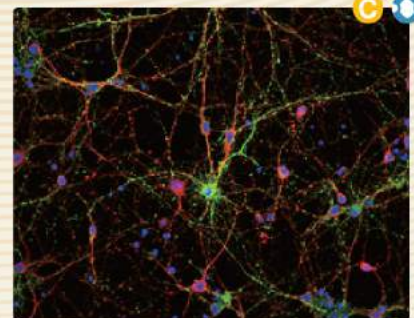
Neurites & Synapses



MAP2 antibody (GTX133109)

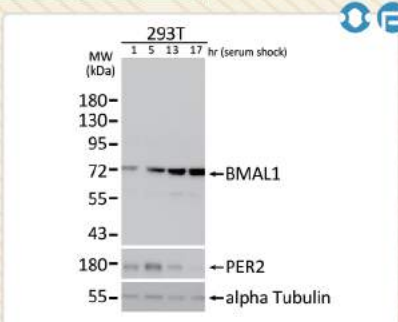


Tau antibody (GTX130462)

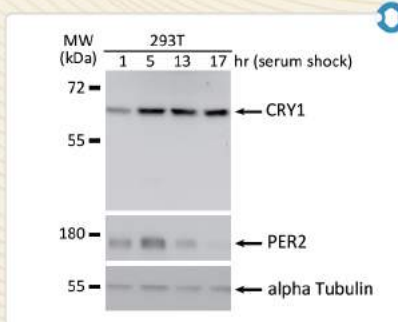


Synaptophysin antibody (GTX100865)

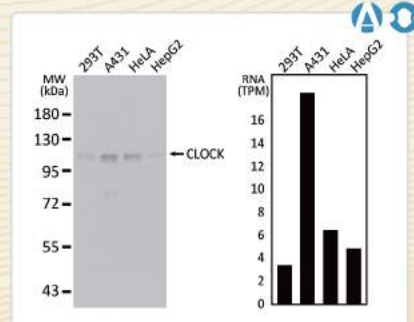
Circadian Rhythm



BMAL1 antibody [N1N3] (GTX105060)

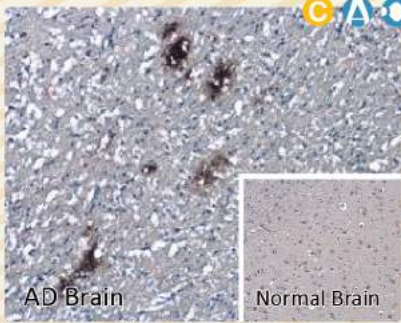


CRY1 antibody (GTX132177)

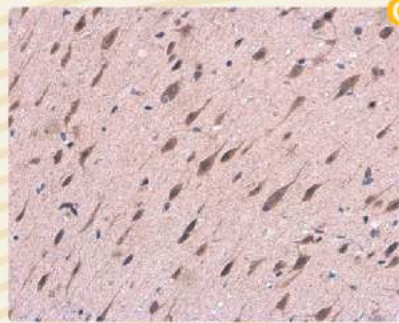


CLOCK antibody (GTX134464)

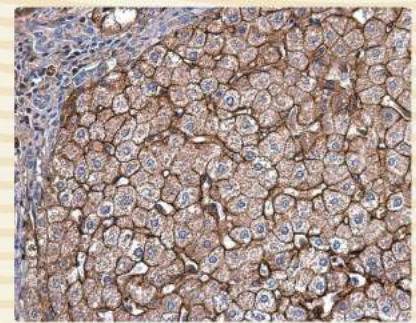
Alzheimer's Disease



beta amyloid (1-42) antibody-
Conformation Specific (GTX134510)

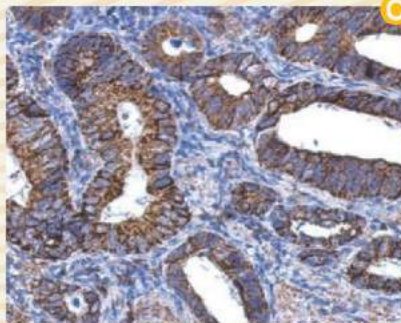


APP antibody (GTX101336)

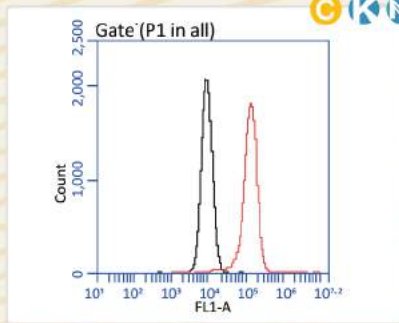


Apolipoprotein E antibody
(GTX101456)

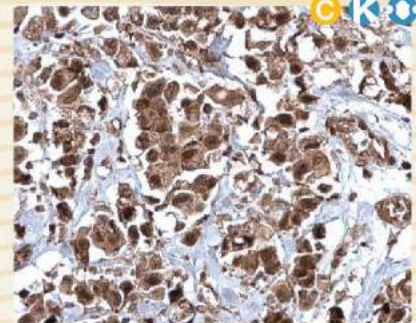
Cancer Stem Cells



ALDH1A1 antibody (GTX123973)



CD44 antibody [GT981] (GTX628472)

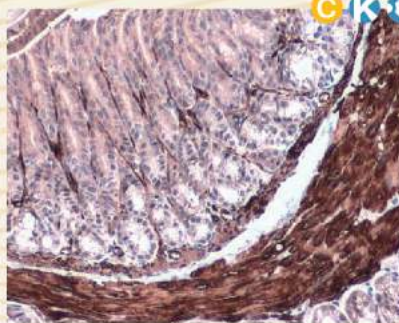


Bmi1 antibody (GTX114008)

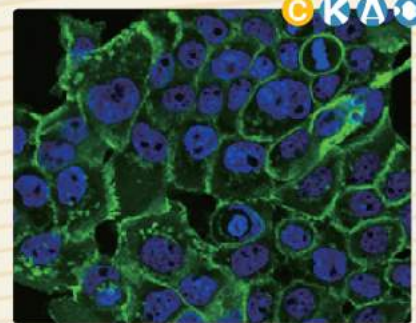
EMT



beta Catenin antibody (GTX101435)

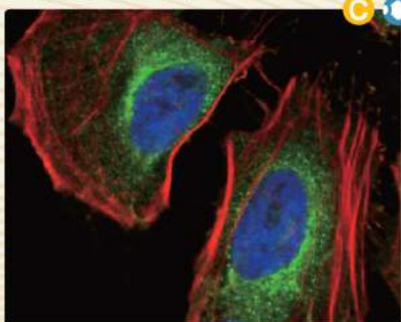


alpha Smooth Muscle Actin
antibody (GTX100034)

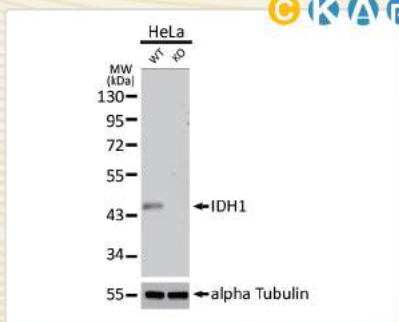


E-Cadherin antibody (GTX100443)

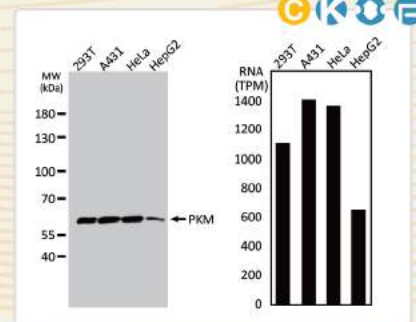
Cancer Metabolism



LDHA antibody (GTX101416)



IDH1 antibody [GT1521] (GTX629818)



PKM antibody (GTX107977)

Terms and conditions

1. Offer valid for 25 µl size primary antibodies only.
2. Promotion code: Panel2021
3. Promotion period: July 1st to September 30th 2021
4. Promotion area: Malaysia
5. GeneTex reserves the right to change or withdraw the offer at any time.

Your Research is Our Business

+603-8943-3252
 custcare@apicalscientific.com
 ApicalScientific
 www.apicalscientific.com [Live Chat!](#)