

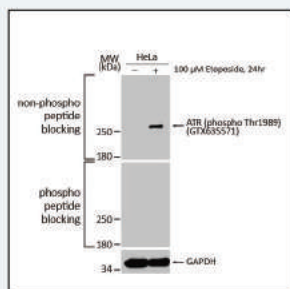


SPECIAL 30% OFF

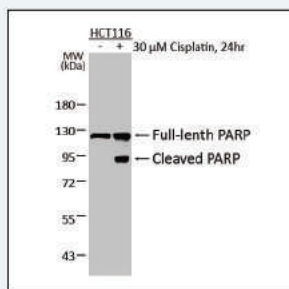
Primary Antibodies
25µl Package

Valid from 1st Jan – 31st Mar 2024

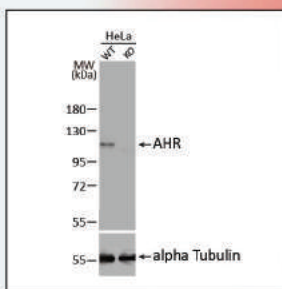
Cell Biology



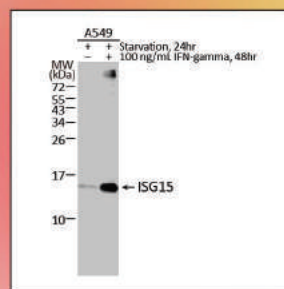
ATR (phospho Thr1989) antibody [HL132] (GTX635571)



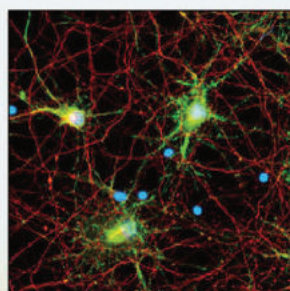
PARP antibody [HL1364] (GTX636804)



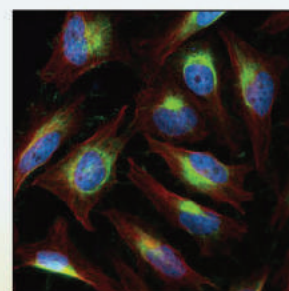
AHR antibody [HL1984] (GTX637885)



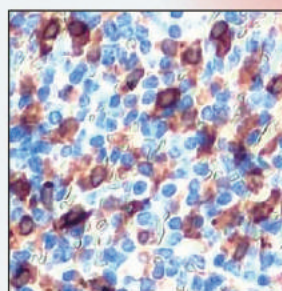
ISG15 antibody [HL2017] (GTX637918)



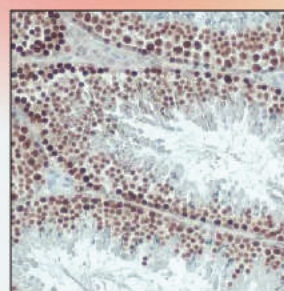
iNOS antibody [HL1213] (GTX636531)



Vimentin antibody [HL1506] (GTX636980)

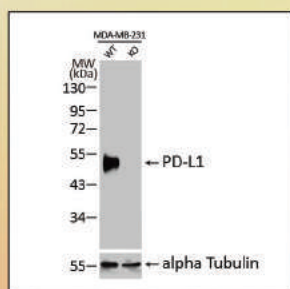


Heme Oxygenase 1 antibody [HL1780] (GTX637432)

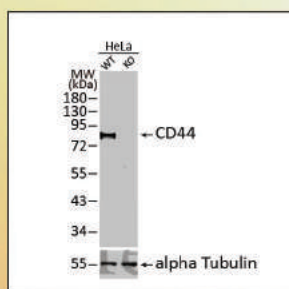


Histone H2A.XS139ph (phospho Ser139) antibody [HL1299] (GTX636713)

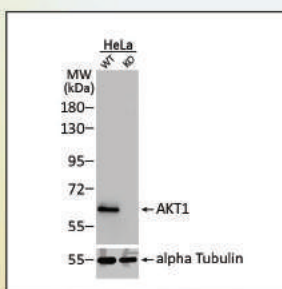
Cancer Research



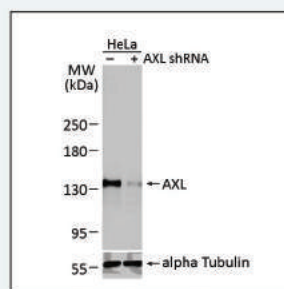
PD-L1 antibody [HL1041] (GTX635975)



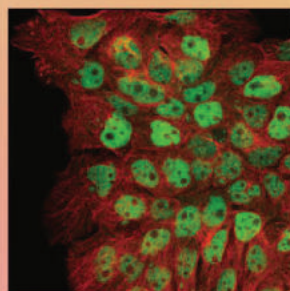
CD44 antibody [HL1650] (GTX637231)



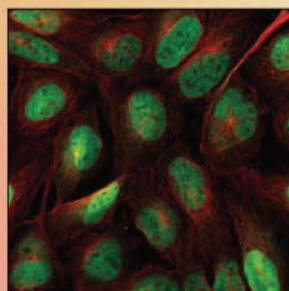
AKT1 antibody [HL1145] (GTX636416)



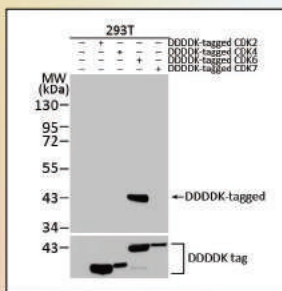
AXL antibody [HL2021] (GTX637922)



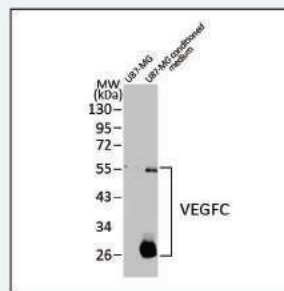
p63 antibody [HL1027] (GTX635841)



YAP1 antibody [HL1894] (GTX637643)

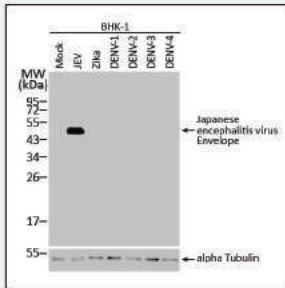


CDK6 antibody [HL2078] (GTX637986)

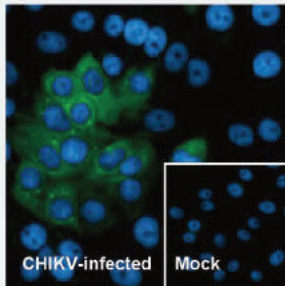


VEGFC antibody [HL2289] (GTX638344)

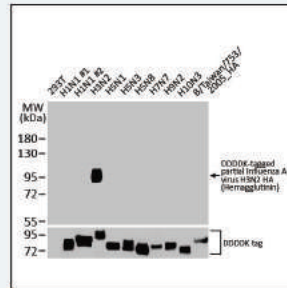
Virus Research



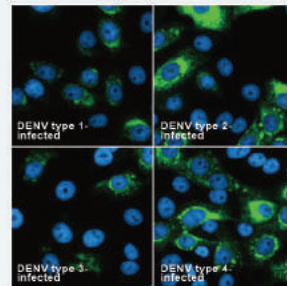
Japanese encephalitis virus Envelope antibody [HL2517] (GTX638878) [R](#)



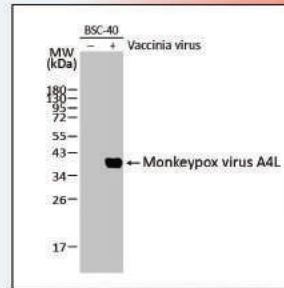
Chikungunya virus nsP2 antibody [HL1488] (GTX636962) [R](#)



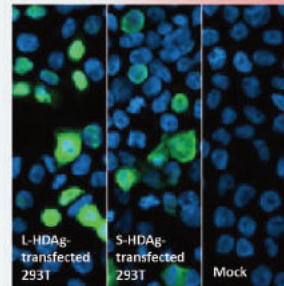
Influenza A virus H3N2 HA (Hemagglutinin) antibody [HL2393] (GTX638602) [R](#)



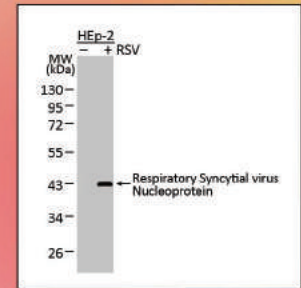
Dengue virus Envelope protein antibody [HL2089] (GTX637997) [R](#)



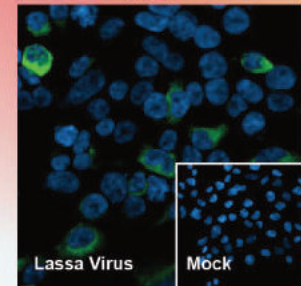
Monkeypox virus A4L antibody [HL2555] (GTX638927) [R](#)



Hepatitis D virus Large delta + Small delta protein antibody [HL1055] (GTX636030) [R](#)



Respiratory Syncytial virus Nucleoprotein antibody [HL1246] (GTX636648) [R](#) [A](#)



Lassa virus Nucleoprotein antibody [HL1392] (GTX636832) [R](#)

Highlighted Publications

Infectious Diseases

SARS-CoV / SARS-CoV-2 (COVID-19) spike antibody [1A9] (GTX632604) [R](#) [A](#) [B](#)

Nature. 2023 Jul;619(7971):819-827.
Nat Genet. 2023 Apr;55(4):595-606.
Natl Sci Rev. 2023 Apr 14;10(5):nwac034.
Nat Microbiol. 2023 Jan;8(1):121-134.
Nat Commun. 2023 Sep 18;14(1):5666.
Sci Adv. 2023 Aug 4;9(31):eadg212.
Cell Rep Med. 2023 Aug 15;4(8):101127.
Cell Rep Med. 2023 Jun 20;4(6):101079.
Brain. 2023 Mar 1;146(3):1175-1185.
Cell Discov. 2023 Apr 11;9(1):40.

SARS-CoV-2 (COVID-19) Nucleocapsid antibody [HL344] (GTX635679) [R](#) [B](#)

Signal Transduct Target Ther. 2023 Feb 3;8(1):53.
Sci Transl Med. 2023 Jan 18;15(679):eabq4064.
Sci Adv. 2023 Sep 22;9(38):eadj1736.

Zika virus Envelope protein antibody (GTX133314) [R](#) [B](#)

Signal Transduct Target Ther. 2023 May 9;8(1):194.
Nat Commun. 2023 Sep 8;14(1):5541.
Cell Rep Med. 2023 Aug 15;4(8):101127.

Zika virus Capsid protein antibody (GTX133317) [R](#) [B](#)

Nat Commun. 2023 May 10;14(1):2698.

Zika virus NS3 protein antibody (GTX133309) [R](#) [B](#)

Signal Transduct Target Ther. 2023 May 9;8(1):194.
Nat Commun. 2023 May 10;14(1):2698.

Zika virus NS5 protein antibody (GTX133312) [R](#) [B](#)

Signal Transduct Target Ther. 2023 May 9;8(1):194.

Influenza A virus Nucleoprotein antibody (GTX125989) [R](#) [B](#)

Signal Transduct Target Ther. 2023 May 9;8(1):194.
Nat Commun. 2023 Mar 30;14(1):1763.
Nat Commun. 2023 Feb 11;14(1):787.

Influenza A virus PB2 protein antibody (GTX125926) [R](#) [B](#) [C](#)

Nat Commun. 2023 Oct 10;14(1):6135.
Sci Adv. 2023 Jul 14;9(28):eadg5175.
Nat Commun. 2023 Feb 11;14(1):787.

Influenza A virus PB1 protein antibody (GTX125923) [R](#) [B](#)

Nat Commun. 2023 Oct 10;14(1):6135.
Nat Commun. 2023 Feb 11;14(1):787.

Dengue virus NS3 protein antibody (GTX124252) [R](#) [B](#)

Signal Transduct Target Ther. 2023 May 9;8(1):194.

Enterovirus D68 VP1 antibody (GTX132313) [R](#) [B](#)

Cell Rep Med. 2023 May 16;4(5):101024.

Cancer

alpha Smooth Muscle Actin antibody (GTX100034) [R](#) [B](#) [C](#)

Nat Commun. 2023 May 13;14(1):2759.

alpha Tubulin antibody [GT114] (GTX628802) [R](#) [B](#)

Nat Commun. 2023 Aug 28;14(1):5241.

ATR antibody (GTX128146) [R](#) [B](#) [C](#) [D](#)

Nat Commun. 2023 Aug 17;14(1):4991.

beta Actin antibody (GTX109639) [R](#) [B](#) [C](#) [D](#)

Nat Commun. 2023 Aug 18;14(1):5016.

Caspase 3 antibody (GTX110543) [R](#) [B](#) [C](#) [D](#)

Sci Adv. 2023 Apr 14;9(15):eadg3422.

CD81 antibody (GTX101766) [R](#) [B](#) [C](#) [D](#) [E](#)

Sci Adv. 2023 Apr 14;9(15):eadg5041.

COMMD7 antibody (GTX112076) [R](#) [B](#)

Cell. 2023 May 11;186(10):2219-2237.e29.

E-Cadherin antibody (GTX100443) [R](#) [B](#) [C](#) [D](#) [E](#)

J Exp Clin Cancer Res. 2023 Aug 10;42(1):204.

GAPDH antibody [GT239] (GTX627408) [R](#) [B](#) [C](#)

Nature. 2023 Oct;622(7982):359-366.

Iba1 antibody [GT10312] (GTX632426) [R](#) [B](#) [C](#)

Sci Adv. 2023 May 12;9(19):eadg3559.

Ki67 antibody [SP6] (GTX16667) [R](#) [B](#)

Nat Commun. 2023 Sep 6;14(1):5195.

Lamin A + C antibody (GTX101127) [R](#) [B](#) [C](#) [D](#)

Sci Adv. 2023 Apr 14;9(15):eadg3422.

MAP2 antibody (GTX133109) [R](#) [B](#)

Nat Commun. 2023 Aug 24;14(1):5150.

MMP2 antibody (GTX104577) [R](#) [B](#) [C](#)

Sci Adv. 2023 Apr 14;9(15):eadg3422.

PCNA antibody (GTX100539) [R](#) [B](#) [C](#) [D](#)

Nat Genet. 2023 Apr;55(4):595-606.

p63 antibody [N2C1], Internal (GTX102425) [R](#) [B](#) [C](#) [D](#)

Nat Microbiol. 2023 May;8(5):875-888.

Rad51 antibody [14B4] (GTX70230) [R](#) [B](#) [C](#) [D](#) [E](#)

Cells. 2023 Oct 9;12(19):2420.

SLUG antibody (GTX128796) [R](#) [B](#) [C](#) [D](#) [E](#)

Sci Adv. 2023 Apr 14;9(15):eadg3422.

Distributed by



Terms & Conditions

- ◆ Offer valid for 25 µL package of 6-digit primary antibodies (ex. GTX632426 or GTX104753)
- ◆ Promotion period: January 1st to March 31st 2024
- ◆ Promotion area: Malaysia